

Hospitality's  
Trusted  
Bedding  
Partner  
Since 1983



sabah® bedding





# Our Story

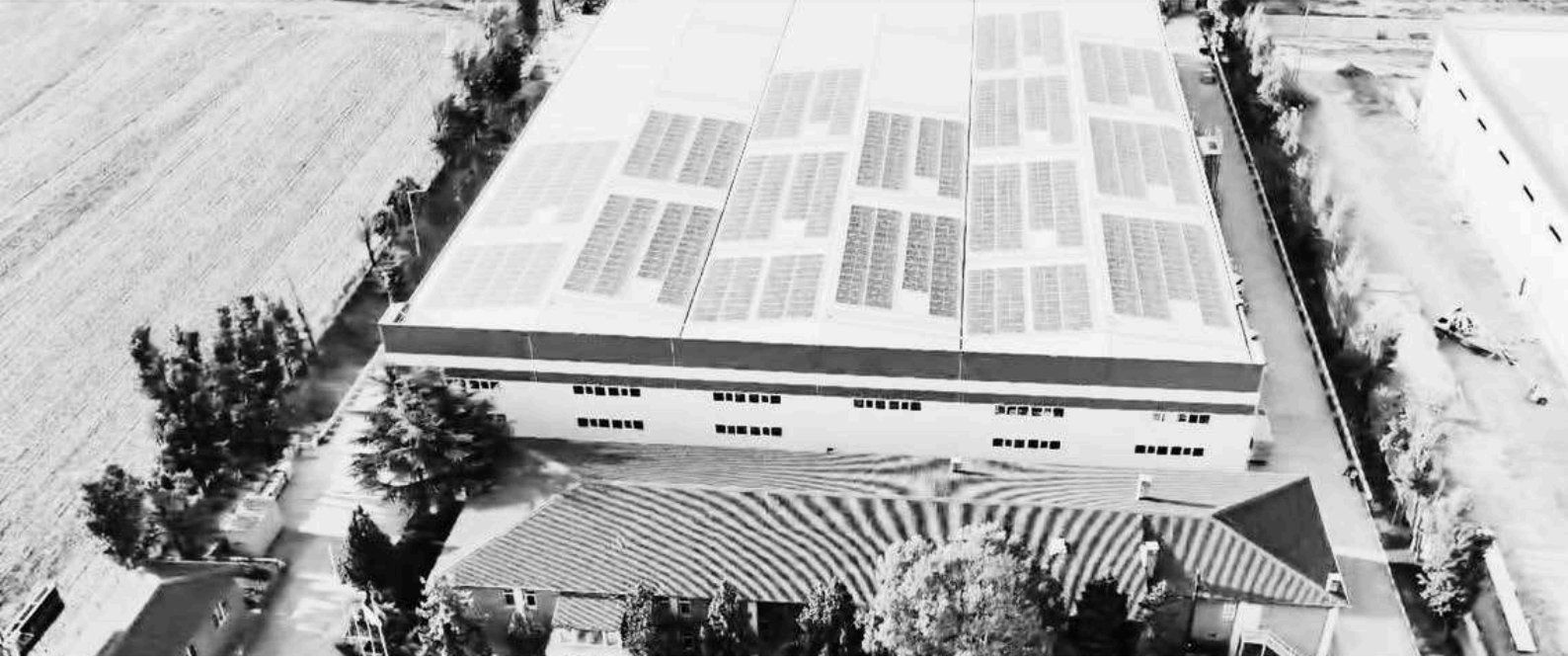
Sabah Bedding: Elevating Hospitality Through Expertise and Sustainability

Since 1983, Sabah Bedding has been a trusted partner to the global hospitality industry, specializing in custom-made bedding solutions for hotels. With nearly 98% of our production dedicated to hotels, we understand the unique needs of the industry, offering a blend of quality, affordability, and efficiency that sets us apart.

Operating from our advanced factory in Çorlu, Tekirdağ, with the capacity to produce 1,000 mattresses and bases daily, we deliver tailored solutions to leading international hotel brands such as Marriott, Accor, Wyndham, and Radisson. These partnerships reflect our commitment to reliability, flexibility, and mutual growth.

Sustainability is at the core of everything we do. With an EcoVadis Silver rating placing us in the top 15% of companies, we are proud to combine luxurious comfort with environmentally responsible practices. Driven by innovation and a passion for excellence, Sabah Bedding is more than a supplier—we're your partner in creating exceptional guest experiences worldwide.





# Excellence in Production

## Crafting Quality Beyond Expectations

At Sabah Bedding, our state-of-the-art factory in Çorlu, Tekirdağ, is where innovation meets craftsmanship. With a daily capacity to produce 1,000 mattresses and bases, we combine meticulous attention to detail with cutting-edge technology to deliver products that meet the highest industry standards.

We source only the finest raw materials, ensuring durability, comfort, and luxury in every piece we produce. Our rigorous quality control process guarantees that each product adheres to strict production standards, reflecting our unwavering commitment to excellence.

From the first stitch to the final inspection, Sabah Bedding's dedication to perfect craftsmanship ensures that our bedding solutions not only meet but exceed the expectations of the world's leading hotels.



# Sabah in numbers



100+ Team Members  
10.000 sqm covered production area  
Mattress-Base-Extrabeds-White Linen  
Pillow-Quilt-Head Board-Protector Production



31 % Female Employees in 2023  
Management : 3 Male  
Blue Collar : 17 Female - 51 Male  
White Collar : 13 Female, 17 Male



Employee Turn Over Rate in 2022  
Female : 2%  
Male : 6%



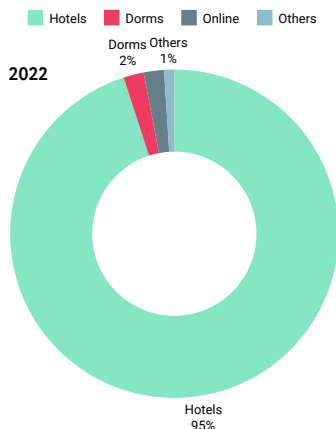
1910 Hours Training/Education in 2022  
Personal Development - Technical Training -  
Sustainability&Carbon Managment - OH&S -  
Anti-Corruption,Ethics and Human Rights



Daily Production Capacity  
1000 pcs Mattresses & Bases  
1500 pcs Quilts+ Pillows  
250 pcs Extra Beds



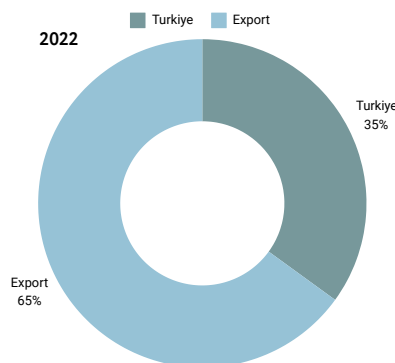
Split of our total sales



Split of sold products

Mattress	65%
Base	25%
Textile	5%
Extra Beds	5%

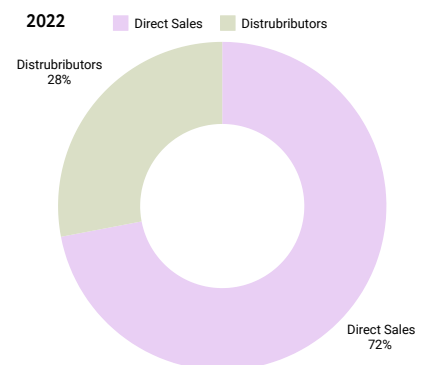
Split of hotel sales



Split of Int. Sales by region

Europe	45%
Africa	5%
CIS	35%
Middle East	15%

Split of sale channels

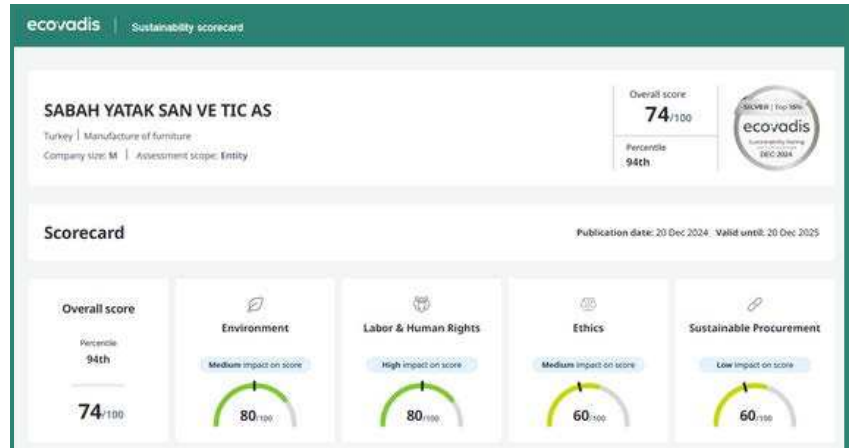


Split of Export Sales by client

Internation Chains	%60
Local Hotel Chains	%12
Local Individuals	%19



# Redefining Sustainability



Achieving the Silver EcoVadis rating places Sabah Bedding among the top 15% of companies globally, reflecting our dedication to sustainability, ethical practices, and continuous improvement in environmental, social, and governance standards.



Forests certified by the FSC meet stringent standards regarding biodiversity conservation, protection of endangered species, indigenous peoples' rights, workers' rights, and community relations.



The "Zero Waste" certification recognizes production facilities that implement sustainable practices to minimize waste, emphasizing recycling, efficient resource use, and reducing environmental impact. It highlights a commitment to eco-friendly operations and sustainability.

# Our Valued Collaborations



## REGION : EE - TR - CIS

### BRANDS IN OUR SCOPE



Premium	Mövenpick , Pullman, Grand Mercure
Midscale	Novotel, Tribe, Hand Written Collection, Mercure
Economy	Ibis, Ibis Styles, Ibis Budget

## REGION : EMEA

### BRANDS IN OUR SCOPE

Luxury	Ritz Carlton, St Regis, The Luxury Collection, JW Marriott
Premium	Marriott, Le Meridien, Sheraton, Autograph Collection Delta, Tribute Portfolio, Design Hotels , Renaissance Marriott Vocation Club,
Select	Courtyard, Four Points, Fairfield, AC Hotels, Aloft , Moxy City Express By Marriott, Four Points Flex
Longer Stays	Residence Inn, Marriott Executive Apartments







## REGION : EMEA

### BRANDS IN OUR SCOPE



Radisson Collection , Radisson Blu , Radisson  
Radisson Red , Radisson Individuals , Artotel  
Park Inn , Park Plaza , Country Inn&Suites , Prize By Radisson

## REGION : EMEA

### BRANDS IN OUR SCOPE



Distinctive	Registry Collection , Dolce , Wyndham Grand
Upscale	Wyndham , Trademark Collection
Lifestyle	Tryp , Dazzler , Vienna House ,
Midscale	La Quinta , Wyndham Garden , Ramada , Ramada Encore
Economy	Days Inn , Super 8



# Trusted Partners in Hospitality

We do not have a formal contract with the following hotel brands; however, we have supplied our products to many of their hotels in Türkiye and abroad

**IHG**  
HOTELS & RESORTS

**Barceló**  
HOTEL GROUP

**hillside**  
BEACH CLUB

**WISH**  
More  
HOTEL GROUP

**Swandor**  
HOTELS & RESORTS

**concorde**  
HOTELS & RESORTS

**PAPILLON**  
HOTELS · RESORT · SPA

**THE MARMARA**

**Liberty Hotels**

**corendon**  
HOTELS & RESORTS

**BW**  
Best  
Western.

**MERIT**  
INTERNATIONAL  
HOTELS & RESORTS

**divan**

**GÜRAL**  
PREMIER HOTELS & RESORTS



# Mattresses

## Mattresses Tailored for Hospitality Excellence

we craft a wide range of mattress models designed to meet the diverse needs of the hospitality industry. From Bonnell spring to pocket spring and hybrid models, our mattresses are engineered for durability, comfort, and luxury.

Many of our models are inspired by the specifications and preferences of renowned international hotel brands, ensuring they meet the high standards expected by the world's leading hotels.

To further enhance flexibility, we offer Zip & Link solutions, allowing mattresses to seamlessly convert from single to double configurations, providing ultimate convenience for hotel operations.





# Bases

Our collection is further enhanced with multiple base options, including:

Solid Base, BoxSpring Base, Cuvette Base, Framed Base and more,

ensuring flexibility for every hotel setup.

Heights are 15 cm to 30 cm.





# Extra Beds



Folding Beds



Rollaway Beds



Lux

Standard

# Headboards





# Smart Solutions



Zip&Link



Comfort  
Connection  
Topper

Thin & Thick Versions





# Protectors

## Mattress Protectors for Lasting Comfort

Our mattress protectors come in various designs, including elastic corner bands and complete cover versions, ensuring a perfect fit for any mattress. Each model is also available with a waterproof option, providing added protection and durability for hotel use.

Sabah Bedding mattress protectors keep your mattresses in top condition, extending their lifespan and enhancing guest comfort.





# Quilts & Pillows



## Quilts Designed for Comfort and Luxury

Our quilts are available with feather or siliconized polyester fiber filling in various weights and down/feather combinations. Choose from 100% Cotton or 80/20 Cotton/Polyester blend covers, ensuring a perfect balance of luxury, warmth, and durability for your guests.



## Pillows for Every Preference

We offer a wide range of pillows to suit every guest's needs, including options with polyester and feather filling. For hotels seeking variety, our pillow menu includes specialty options such as Neck-Support, Cotton, Wool, Cool-Gel, and Latex pillows, providing comfort and support for all preferences.

# References

## Marriott International

JW Marriott Marmara Sea  
JW Marriott İstanbul Bosphorus  
JW Marriott Absheron Baku  
Sanasaryan Han İstanbul, A Luxury Collection Hotel  
Marriott Hotel İstanbul Şişli  
Marriott Hotel İstanbul Asia  
Marriott Hotel İzmir  
Marriott Taghazout Bay, Maroc  
Marriott Hotel Tbilisi, Georgia  
Marriott Hotel Dzaghghgadzor, Armenia  
Marriott Hotel Yerevan, Armenia  
Marriott Hotel Chisinau, Moldovia  
Marriott Hotel Capaddocia  
Marriott Hotel Boulevard Baku  
Le Meridien Batumi  
Le Meridien Istanbul Etiler  
Sheraton Ataköy  
Sheraton Esenyurt Hotel&Residence İstanbul  
Sheraton Frankfurt Airport Hotel&Conference Center  
Sheraton İstanbul Levent  
Sheraton Bishkek  
Four Points by Sheraton Prishtine  
Four Points by Sheraton Budapest, Danube  
Four Points by Sheraton Sunny Beach Bulgaria  
Four Points by Sheraton Bansko  
Four Points by Sheraton Pendik  
Four Points by Sheraton São Vincent Cape Verde  
The Marmorosch Bucharest, Autograph Collection  
Orientbank Hotel, Autograph Collection  
DeCamondo Galata, A Tribute Portfolio Hotel  
Adahan DeCamondo Pera, Autograph Collection  
Orient Occident Hotel Istanbul, Autograph Collection  
The Bank Hotel Istanbul, , Design Hotels  
Gezi Bosphorus Hotel Istanbul, Design Hotels  
Burdock Hotel Istanbul, Autograph Collection  
Dorothea Hotel Budapest, Autograph Collection  
Park Chalet, Shahdag, Autograph Collection  
Pik Palace Shahdag, Autograph Collection  
Corendon Amsterdam New West, Tribute Portfolio  
The College Hotel Amsterdam, Autograph Collection  
Autograph Collection Istanbul Old Town Basiret Han  
Marriott Executive Apartments Istanbul, Fulya  
Millenium Court Budapest Marriott Executive Apts.  
Marriott Executive Apartments Antalya  
Marriott Executive Apartments Vadi İstanbul



# References

## Radisson Hotel Group

Radisson Collection Hotel Bodrum  
Radisson Blu Hotel Tuzla  
Radisson Blu Hotel Ataşehir  
Radisson Blu Royal Hotel St Petersburg  
Radisson Blu Bosphorus Hotel Istanbul  
Radisson Blu Çeşme  
Radisson Blu Al Mahary  
Radisson Blu Bursa  
Radisson Blu Diyarbakır  
Radisson Blu Leograd Moldova  
Radisson Blu Hotel Merter  
Radisson Blu Abidjan Airport Ivory Coast  
Radisson Blu Algiers Hydra  
Radisson Hotel Dakar Diamniadio  
Radisson Blu Niger  
Radisson Hotel Baku  
Park Inn Hotel Güneşli  
Park Inn Hotel Ataşehir  
Park Inn Hotel Samsun  
Park Inn Hotel Odayeri  
Park Inn Hotel Yalova City  
Park Inn Hotel Moscow  
Radisson Residence GOP Istanbul

## Accor

The Artisan Istanbul M Gallery  
Sofitel Cotonou Marina Hotel&Spa  
Mercure Prishtina City  
Mövenpick Golden Horn  
Mövenpick Living Çamlıvadi Istanbul  
Mövenpick Living Saklıvadi İstanbul  
Mövenpick Trabzon  
Novotel Tbilisi Center  
Novotel Antananarivo Madagascar  
Novotel Bomonti  
Novotel Bosphorus  
Novotel Trabzon  
Ibis Styles Batumi  
Ibis Tbilisi Airport  
Ibis Styles Tbilisi Old Town  
Greet by Accor Tbilisi



# References

## Wyndham Hotels&Resorts

Ramada Plaza by Wyndham Istanbul City Center  
Ramada by Wyndham Podgorica  
Ramada Resort by Wyndham Kuşadası  
Ramada by Wyndham Uşak  
Ramada by Wyndham İstanbul Alibeyköy  
Ramada by Wyndham Beylikdüzü  
Ramada by Wyndham İstanbul Grand Bazaar  
Ramada by Wyndham Lara  
Ramada Plaza by Wyndham Ordu  
Ramada Plaza by Wyndham Batumi  
Ramada Encore by Wyndham Zomin  
Wyndham Garden Zomin  
Wyndham Garden Baku  
Ramada Encore by Wyndham İstanbul Şişli  
Wyndham Residence Aqkol / Kazakhstan  
Ramada Plaza by Wyndham Ataköy  
Ramada by Wyndham Fethiye  
Trip by Wyndham İstanbul Maltepe  
Ramada Plaza Kahramanmaraş  
Ramada Plaza Ataköy

## Intercontinental Hotels Group

Intercontinental Hotel Baku  
Intercontinental Hotel Tashkent  
Intercontinental Hotel Ankara  
Crowne Plaza Ortaköy Bosphorus  
Crowne Plaza Dushanbe  
Holiday Inn Çukurambar Ankara  
Holiday Inn İstanbul Old City  
Holiday Inn Telavi  
Holiday Inn Bursa City Center  
Holiday Inn Kadıköy  
Holiday Inn Tuzla  
Holiday Inn Lara  
Holiday Inn Tashkent  
Holiday Inn Express Ataköy Metro

## Best Western Hotels

Best Western Chassieu  
Best Western Empire Palace İstanbul  
Best Western Amber Hotel İstanbul  
Best Western Plus Clos Syrah  
Best Western Premier Collection Eden Rose Grand Hotel



# Contact

## Head Office

Cevizli Mah. Bağdat Cad. No 519 D 8  
34846 Maltepe İstanbul Türkiye

+90 216 442 62 62

## Factory

Ulaş OSB Mahallesi 207 Sok, 2 OSB  
No:7/1, 59870 Ergene/Tekirdağ

+90 282 655 59 76

## Regional Office

Meydankavağı Mah. Perge Bulv. Süleyman Ekim  
Sitesi No 46/E 07200 Muratpaşa/Antalya

+90 242 312 64 25

[www.sabahbedding.com](http://www.sabahbedding.com)

[info@sabahbedding.com](mailto:info@sabahbedding.com)

## Contract Sales - Export

Nazlı İçli ( Sales Manager )

+90 533 385 57 13

[nazli.icli@sabahbedding.com](mailto:nazli.icli@sabahbedding.com)

Uraz Solmaz ( Sales Manager )

+90 533 225 51 53

[uraz.solmaz@sabahbedding.com](mailto:uraz.solmaz@sabahbedding.com)

Lizi Leselidze ( Export Sales )

+90 535 022 21 28

[lizi.leselidze@sabahbedding.com](mailto:lizi.leselidze@sabahbedding.com)

Önder Arkan

+90 532 234 36 05

[onder.arikan@sabahbedding.com](mailto:onder.arikan@sabahbedding.com)

